

# Aria Step



Rialto Collection

**NEW COLOURS!**



**Steps:** Aria Step, Champagne  
**Slabs:** Rialto 60mm, Champagne

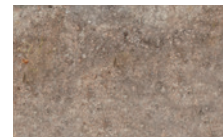


SMOOTH  
TOP, BACK & ENDS



EMBOSSSED  
FRONT FACE

CHAMPAGNE

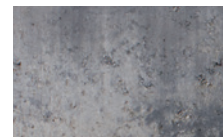


SMOOTH  
TOP, BACK & ENDS



EMBOSSSED  
FRONT FACE

MACKINAW **NEW!**

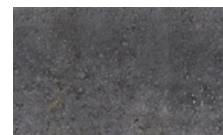


SMOOTH  
TOP, BACK & ENDS



EMBOSSSED  
FRONT FACE

MARBLE GREY **NEW!**



SMOOTH  
TOP, BACK & ENDS



EMBOSSSED  
FRONT FACE

ONYX **NEW!**



**Step Unit**  
47.24 x 6.5 x 15.75"  
(1200 x 165 x 400mm)

# Packaging Specs

Weights/Piece are approximate.

ARIA STEP	BUNDLE SPECIFICATIONS					PER SECTION SPECIFICATIONS					
	LAYERS	SQ. FT.	LIN. FT.	PCS	WEIGHT	SECTIONS	SQ. FT.	LIN. FT.	PCS	WEIGHT	WEIGHT/PCS
<b>Step Unit</b>	1	8.5 (face) 20.6 (top)	15.75	4	1600	No sections available for Aria Step					400

All Oaks Landscape products fully meet or exceed the latest version of CSA A231, ASTM C936, ASTM C1372 or ASTM C1782 as applicable to the specific product and area of sale.



OAKSPAVERS.COM

CA 1.800.709.OAKS (6257) | US 1.800.876.OAKS (6257)

Product representations shown in this publication are intended to convey the general colour, texture and appearance of the product. Variations may occur in the manufacturing and printing process. Always select from current, physical product samples.